

Zu vermieten

Office to let

GERTRUD

Gertrudstrasse 6-12, 8400 Winterthur



Gebäudeinformationen | Building information

Status Building status	Bestand Existing
Letzte Sanierung Year of reconstruction	2023
Total Gebäudefläche Total building area	4'030 m ²

Konditionen | Commercial terms

Miete Büro* Rent office space*	265 - 300 265 - 300
Miete Parking Rent parking	190 190
Nebenkosten* Service charge*	45
Verfügbarkeit Availability	April 2023 April 2023

* CHF/m² p.a. | CHF/sqm p.a.

Lageplan | Location



Verfügbare Fläche | Available space

2'039 m²






Verfügbare Bürofläche
Available office space

299 m²

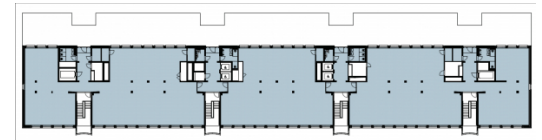
Kleinste Flächeneinheit
Minimum office space



Ausbauzustand | Standard fit-out

-  Zugangskontrollsystem
Access control
-  Bodenbelag
Carpeting
-  Deckensegel
Ceiling sails
-  Kühlung
Cooling
-  Glasfaser
Fiber optics
-  Öffenbare Fenster
Openable windows
-  Doppelboden
Raised floor
-  Lüftung
Ventilation

Grundriss | Floor plan



Verfügbare Fläche | Available space

Floor Floor	Verfügbare Fläche Vacant space	Verfügbarkeit Availability
2	299 m ²	April 2023 April 2023
2	482 m ²	April 2023 April 2023
3	299 m ²	April 2023 April 2023
4	478 m ²	April 2023 April 2023
4	481 m ²	April 2023 April 2023
Gesamt Total	2'039 m²	

Kontakt | Contact



Cedric Ullmann
letting@eu.jll.com
+41 44 215 75 61



Andreas Jordi
letting@eu.jll.com
+41 44 215 75 40

Jones Lang LaSalle AG
Prime Tower
Hardstrasse 201
8005 Zurich

